



Copy file qeartment distribution detail					
Quality Department					
Pur .D					
MD					
PD					
Engineering Department					
SD					

File NO.	e-Cigarette opening and Refill Description	Page	Version
JOYE/QW-MD-01		2 / 2	A.0

1、 Purpose: In order to decare the TPD demand

2、 Function: The documents is prepared by the Market department

3、 Detailed Content:

a-Opening System: Refill the e-liquid from the top of the atomizer (2 holes);

b- Operation instructions:

Unscrew the top cap from the vent pipe component and inject the e-liquid directly into e-juice holes on both sides

c-Note:

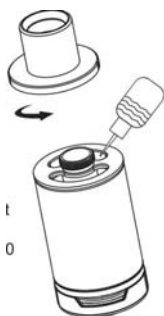
Please do not fill in through the middle hole of the atomizer cap.

Please don't overfill beyond the mark to avoid overfill when reassemble.

Please drip a few drop of e-juice to the atomizer head before its first use to avoid dry burn

After e-juice filling and assembling the whole atomizer ,please vape a few times in powe-off condtion(with airflow widely open)

d-Filling Picture



f-Application of Product

Ultimo Atomizer